



# RECREATION PLAN 2020 - 2025

## Midland Township

[Midlandtownship.net](http://Midlandtownship.net)

1030 S. Poseyville Road, Midland, MI 48640

# Midland Township Recreation Plan 2020 – 2025

## Midland Township Board of Trustees

Terry Holt, Supervisor  
Shelly Armstrong-Miller, Clerk  
Mark Radosa, Treasurer  
Jim Avery, Trustee  
Larry Leach, Trustee  
Matt Clarey, Trustee  
Marcia Northup, Trustee

Public Hearing held on \_\_\_\_\_, 20\_\_  
Adopted on \_\_\_\_\_, 20\_\_

## Prepared by:

1030 S. Poseyville Road  
Midland, MI 48640  
[www.midlandownship.net](http://www.midlandownship.net)

## With assistance from:

Spicer Group, Inc.  
230 South Washington Avenue  
Saginaw, MI 48607  
(989) 754-4717  
[www.spicergroup.com](http://www.spicergroup.com)  
126141SG2018

# TABLE OF CONTENTS

Introduction.....	1
Community Description .....	2
Administrative Structure.....	5
Recreation Inventory .....	6
Community Input.....	10
Goals, Objectives and Action Plan.....	14
Summary and Conclusion.....	18

## Appendix

- Appendix A – Community Input Survey
- Appendix B – Bicycle Trail Map
- Appendix C – Sources of Funding
- Appendix D – Notification and Adoption Information



# INTRODUCTION

## About the Midland Township Recreation Plan

Midland Township has developed a Recreation Plan to serve as a guideline to improve recreation facilities and develop new recreational opportunities. To that end, this document forms the basis to guide policy for implementation of improvements and new initiatives that will meet the recreational goals and interests of the Midland Township community. The development of the Plan was guided by the Midland Township Board.

Before any Recreation Plan is adopted and enacted, it is first important to understand what the needs of the residents are, what recreational opportunities already exist, and what sort of projects are relevant for residents based on age, ability, population, density, and the availability of recreational opportunities in neighboring communities. This Plan has carefully considered input and suggestions via active communication from Township residents, Township officials, and other community stakeholders. This input is a critical component to this Plan, and, together, the voices of Midland Township have united to develop a Recreation Plan to enhance the quality of life for everyone.

The foundation for the development of the Midland Township Recreation Plan was based on the following goals:

- Involve the community in the process to develop a five-year Recreation Plan,
- Identify and map existing Midland Township recreational facilities,
- Build common ground among Midland Township stakeholders in addressing the future recreational needs and priorities of the Township,
- Enable Midland Township to be eligible for financial assistance based upon the Recreation Plan,
- Facilitate interagency collaboration in establishing recreation goals, objectives, and actions, and
- Continue to support and implement improvements for barrier-free, Universal Access to Township parks.

Broadly speaking, Midland Township officials intend to use this Plan to continue to guide their work on all future recreational and parks projects within the Township. It is also a strategic document that articulates specific goals to various agencies and organizations that fund local recreational and parks improvement projects. Specifically, this Plan is developed in accordance with the guidelines for Community Park, Recreation, Open Space, and Greenway Plans published by the Michigan Department of Natural Resources (MDNR). A five-year, MDNR-approved Recreation Plan is necessary for Midland Township to pursue MDNR-administered grants. This Recreation Plan is written for a single Township, Midland Township. It covers all aspects of recreation within the community. This Plan is an update of the Recreation Plan that was adopted as part of the 2015 Midland Township Master Plan.

# COMMUNITY DESCRIPTION

## About Midland Township

Midland Charter Township may be described as a suburban/rural community located adjacent to the City of Midland in Midland County. The Township is located in close proximity to the employment, cultural and commercial uses situated in the City of Midland.

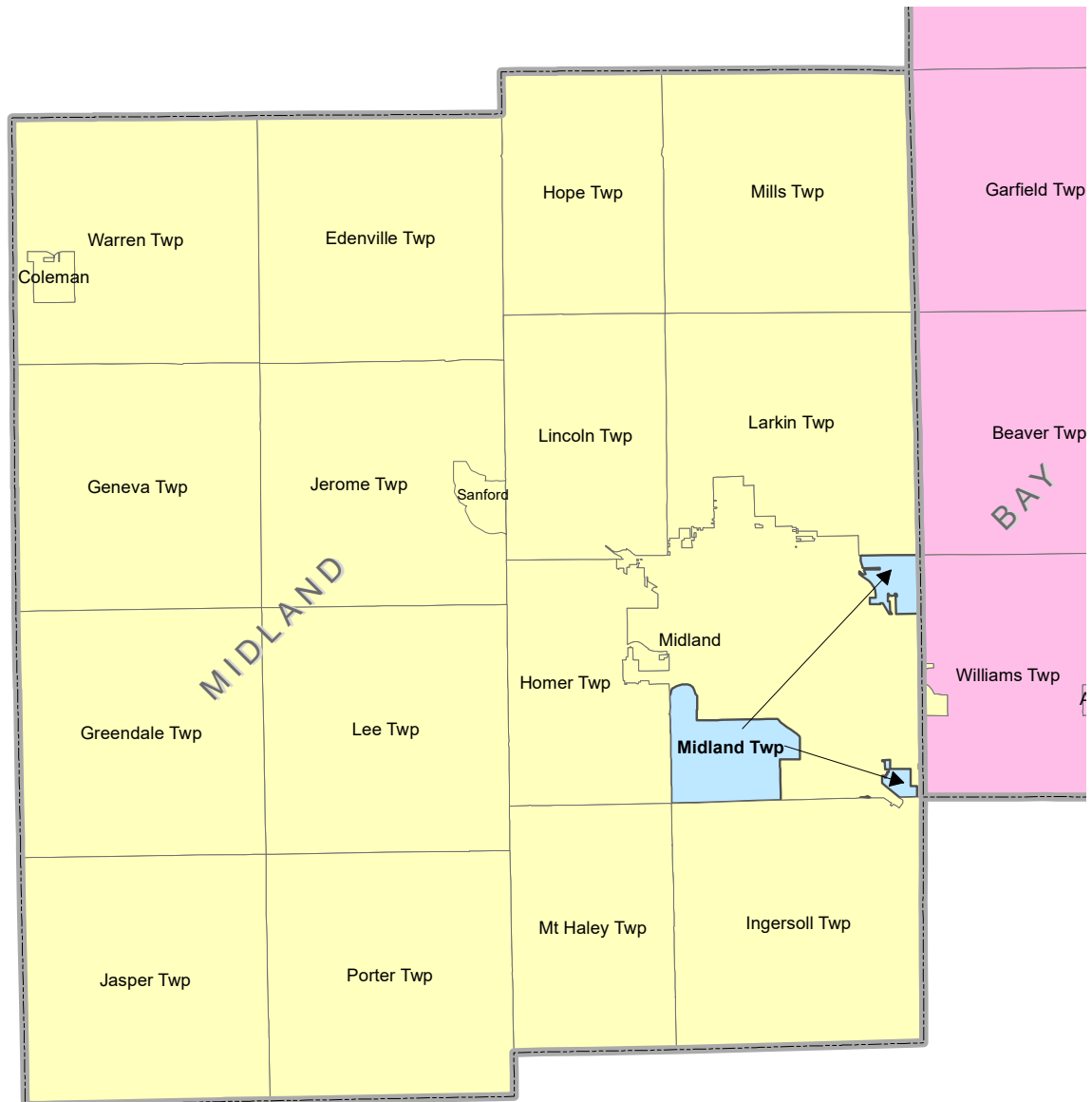


Figure 1 – Midland Township is located in eastern Midland County. It is separated into geographical three sections by the City of Midland.

Significant natural features in Midland Township include woodland tracts, Bullock Creek, and wetland tracts, primarily in the Chippewa Nature Center. A large man-made natural feature are the large Dow cooling ponds which provide waterfowl habitat.

The City of Midland divides Midland Township into three distinct geographical sections, two of which are located south of the City and one section is located northeast of the City. The northeast portion of Midland Township is bordered by Larkin Township to the north, the City of Midland to the south and west and Williams Township to the east in Bay County. The southerly portion of Midland Township shares its western boundary with Homer Township, its northern border with the City of Midland, and its southern boundary with Ingersoll Township.

According to the 2010 U.S. Census, the population of Midland Township was 2,297. The 2017 American Community Survey (ACS) estimate of population is 2,245. The population has remained relatively steady since 1980. See Figure 3.

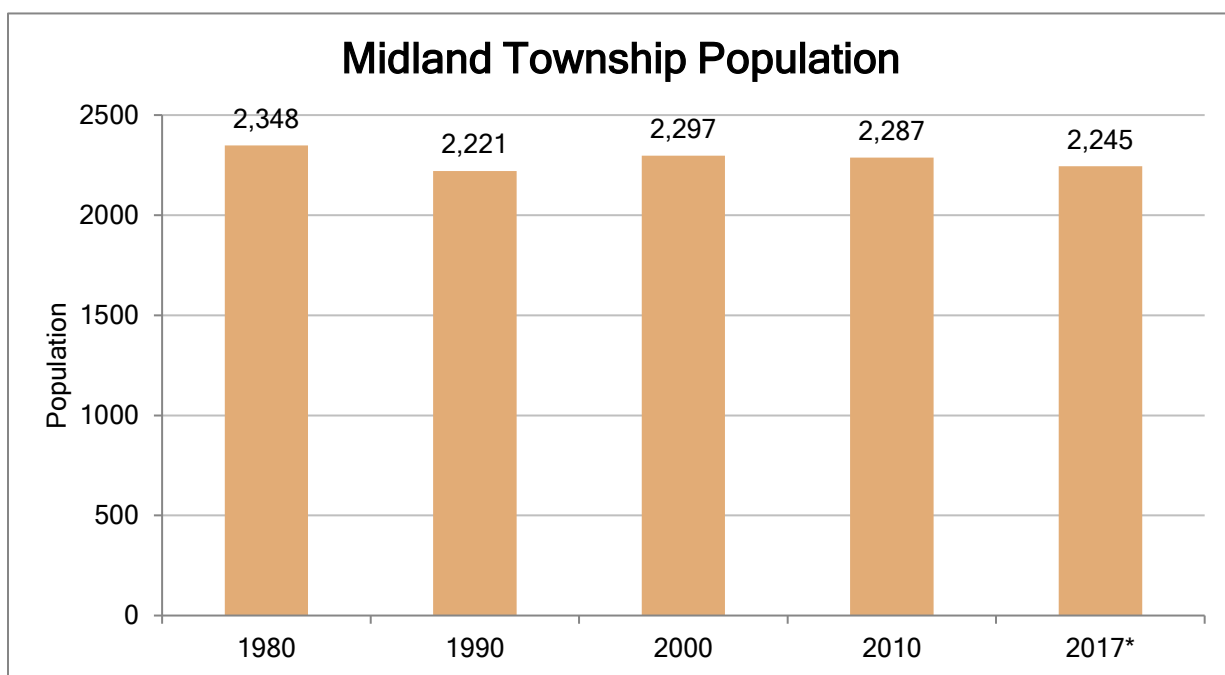


Figure 1 – Midland Township’s population has been relatively stable since 1980. *Source – U.S. Census and American Community Survey \*Estimate*

Demographically, Midland Township is generally similar to Midland County overall. One exception is that there is a higher home ownership rate in Midland Township than in the County. Another difference is that there are fewer individuals beneath the poverty level in Midland Township than in Midland County. Midland Township also has a lower percentage of the population with a bachelor’s degree than does Midland County. Other demographic characteristics of Midland Township as compared to Midland County and the state of Michigan are shown in Figure 3

**Figure 3**  
**COMPARATIVE DEMOGRAPHIC DATA**

	<b>Midland Township</b>	<b>Midland County</b>	<b>Michigan</b>
Median Age	40.7 years	41.5 years	39.6 years
Population under 18	24.7%	21.8%	22.3%
Population over 65	15.2%	16.9%	15.9%
Housing units occupied by renters	9.8%	24.1%	29.0%
Median Household Income	\$58,487	\$57,117	\$52,668
Population with a disability	12.5%	13.6%	14.3%
Individuals below poverty level	5.6%	11.3%	16.6%
Population with bachelor's degree or higher*	22.5%	34.1%	28.1%



# ADMINISTRATIVE STRUCTURE

Parks and Recreation functions in Midland Township are handled by the Township Board. The current funding sources for operation and maintenance is the Township general fund. The Township uses general fund monies and grants to fund capital improvements. Occasional donations are also used for parks and recreation.

Two years of budget data are shown below.

	2019	2018
Operation & Maintenance	\$5,000	\$0
Capital Expenditures	\$0	\$196,200

The Township currently does not rely on volunteers for Parks and Recreation. No recreation programs are offered by the Township.





# RECREATION INVENTORY

## One park in Midland Township

In order to plan for parks and recreation in the future, the types of facilities that currently exist in Midland Township need to be examined. It is also helpful to compare these existing facilities to general standards as one measure of the adequacy of the parks and recreation facilities in the area. The inventory was completed by the consultant on a site visit in August of 2019. An accessibility review was also completed at that time.

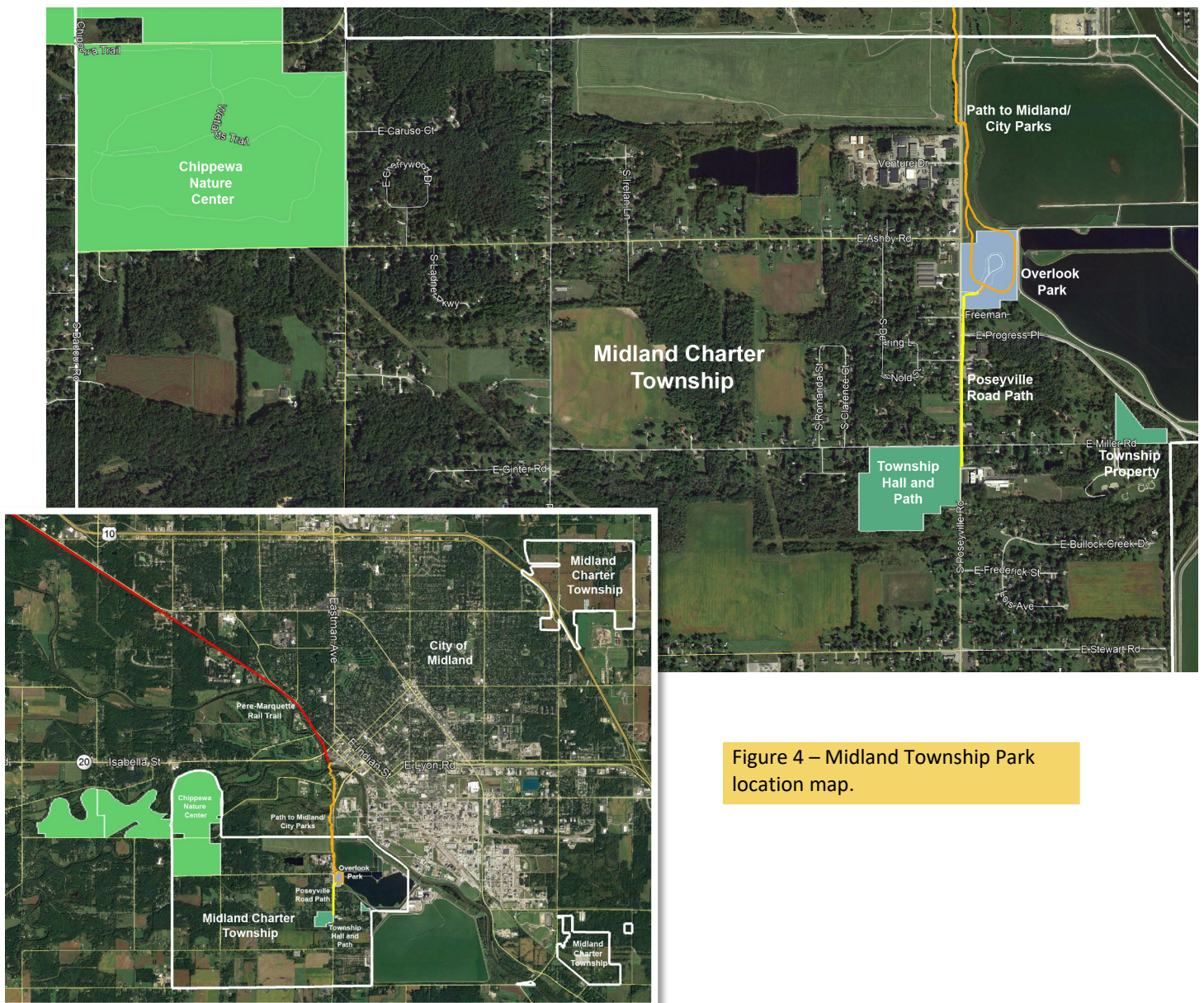


Figure 4 – Midland Township Park location map.

The Midland Township Park is part of a 28-acre parcel that includes the Township Hall. It is located at the southwest corner of Miller and Poseyville Roads. The park was developed in 2018 and it includes a walking path and picnic pavilion. The service area for this park is the entire Township.

Midland Township also owns a 6-acre undeveloped piece of land at the end of Miller Road near the MCV ponds.

## Trails

Communities across the United States are creating regional trail systems in both cities and rural areas to provide a higher quality of life for residents. In fact, of all the states, Michigan has the largest rail-trail system. Even more impressive, these trails more often than not, cover long distances, which is uncommon in other states. Trails give residents the opportunity to be more active and healthy, safer while walking or biking on the roads, additional ways to experience their community, and give all users the option of increased mobility in different modes of travel.

Historically, the roads in Midland Township have been designed with only automobile traffic in mind. However, communities are now working toward creating a network of trails and roads that are accessible to several forms of traffic. This often means sharing the existing road right-of-way with bikes or having a separate pathway running parallel to the road which is designated for non-motorized use and connects regional centers.

### *Why trails are important*

While trails can be a challenge to implement, their positive effects on a community cannot be disputed. Trails create a pride of place and sense of ownership. Trails can be an important component in the local and regional economy, increase property values, and provide safe and healthy recreation options.

The growing trail trend in Michigan is also reflected in Midland Township's residents' opinions. In the public input survey described elsewhere in this plan, respondents emphasized how important non-motorized trails and connectivity to the sidewalks and the park system are to the residents.

Trail users have a measurable impact on the local economy. Working with the surrounding townships and other jurisdictions is an effective way to connect with existing systems and expand the non-motorized pathway infrastructure. These projects would create a long-term, valuable investment in the community and the opportunity to connect the Township to others in the region. This would promote economic vitality, encourage a healthier lifestyle in their residents, and create a safer travel environment.

### *Midland Township Path and Trails*

Midland Township owns and maintains a .6 mile path segment that extends northward along the shoulder of Poseyville Road from the Midland Township Park to Whiting Overlook Park. From there, the Whiting Overlook Path continues to extend toward Midland and it also connects to the Chippewa Nature Center Trails and the Pere-Marquette Rail Trail. The path is 8' wide and its service area is the entire township. The Midland Township Path is also part of the overall Great Lakes Bay Regional Trail System (GLBRT). The GLBRT Trail is intended to connect Bay City, Saginaw, and Midland. A map of the GLBRT Trail system is included in the Appendix.

### *Grant History*

Midland Township has received one DNR park grant. LW16-0051 funded the development of the pavilion and the path.

### *Accessibility*

Creating a park system that is safe, accessible and usable to all individuals within the community, including those with disabilities, is essential. Midland Township has done considerable work to meet the requirements of the ADA and provide barrier free access to its facilities.

A grading system has been developed by the Michigan Department of Natural Resources (DNR) to easily identify those parks and facilities which are most and least handicap accessible and usable, based on the ADA guidelines. The accessibility grading system uses a five-point system ranging from one, none of the facilities/park areas meet accessibility guidelines, to five, the entire park was developed/renovated using the principals of universal design.

MDNR Accessibility Grading System for Parks and Recreational Facilities	
Accessibility Grade	Definition
1	None of the facilities/park areas meet accessibility guidelines.
2	Some of the facilities/park areas meet accessibility guidelines.
3	Most of the facilities/park areas meet accessibility guidelines.
4	The entire park meets accessibility guidelines.
5	The entire park was developed/renovated using the principles of universal design.

The consultant evaluated the park facilities in the fall of 2019. The Midland Township Park is rated with an accessibility grade of 5. All park amenities were developed according to the principles of universal design. The Midland Township Path is rated with an accessibility grade of 4.

### *Comparison to Standards*

A generally accepted standard for quantity of park land is 5 to 10 acres of park land and open space for every 1,000 residents. The current population of Midland Township is approximately 2,245 indicating a range of 11.2 acres of park land to 22.4 acres. Midland Township currently owns approximately 27 acres of land used as a park.

There are no current standards for specific facilities at parks in terms of quantity and variety. In this arena it is best to listen to citizens and find out what facilities they are asking for. Township officials should also be aware of current trends that may drive the need for different facilities. For example, gaga ball pits are currently very popular along with pickleball courts and disc golf.



### *Other Local Recreation Areas*

More than 500 acres of the 1,348-acre Chippewa Nature Center lies with Midland Township. It is a large protected wildlife area with over 19 miles of trails, farm homestead, a nature center, preschool, as well as three miles of shoreline along the Pine and Chippewa Rivers.



The previously mentioned Whiting Overlook Park is located within Midland Township. It is located on Dow property and is maintained by the Midland Community Foundation. It is a popular spot for bird watching during waterfowl migration and it offers sledding during the winter.



# COMMUNITY INPUT

## Listening to Midland Township

To comply with the Michigan Department of Natural Resources guidelines for the Development of Community Park, Recreation Open Space and Greenway Plans, Midland Township offered two opportunities for public input along with a 30-day period for review and comment on the draft plan.

The first opportunity for public input was an online survey where respondents were asked to answer questions about park usage and preferences. The second public input opportunity was the public meeting held after the 30-day review period and prior to the adoption of the plan.

## Survey

The online survey was available from September 18, 2019 to October 22, 2019. It was publicized with a link on the Township website and a Facebook advertisement. Sixty people responded to the survey. Sixty-three percent of the respondents lived in Midland Township. Another 26% of the respondents lived in Midland County outside of Midland Township.

Significant results are discussed below. A complete survey report is contained in the Appendix.

## Familiarity with the Midland Township Park and Path

Survey respondents were generally more familiar with the Midland Township path than the Midland Township Park. See Figures 5 and 6. This is reasonable since the path has existed longer than the park and it is on Poseyville Road, which is one of the most traveled roads in the Township. The park is not very visible to the public as it is located in a wooded area behind the Township Hall. The Township needs to continue to publicize the park and its availability.



Figure 5

### Familiarity with Midland Township Park

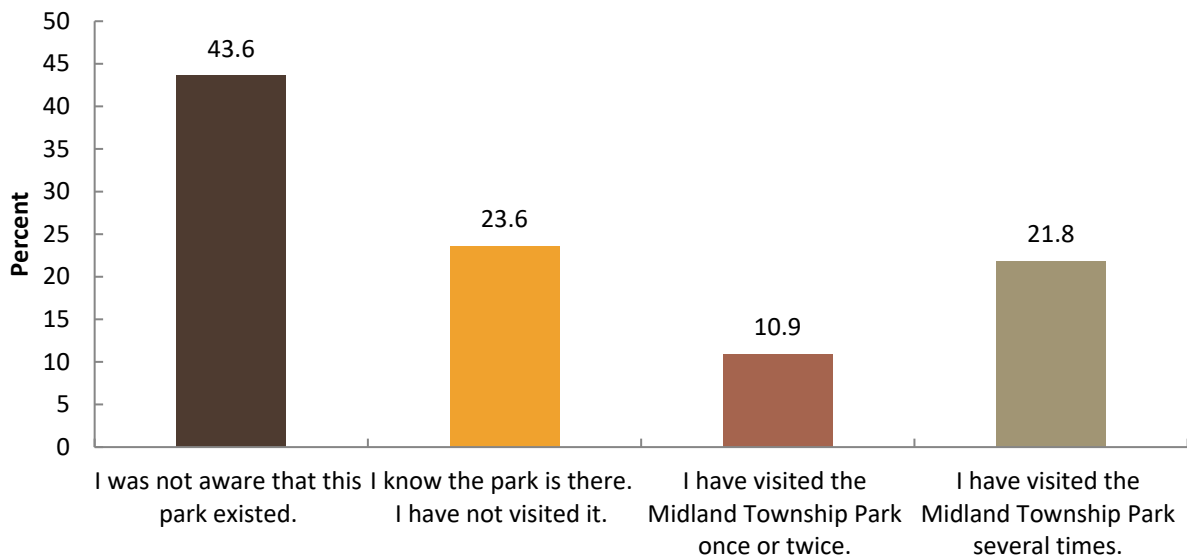
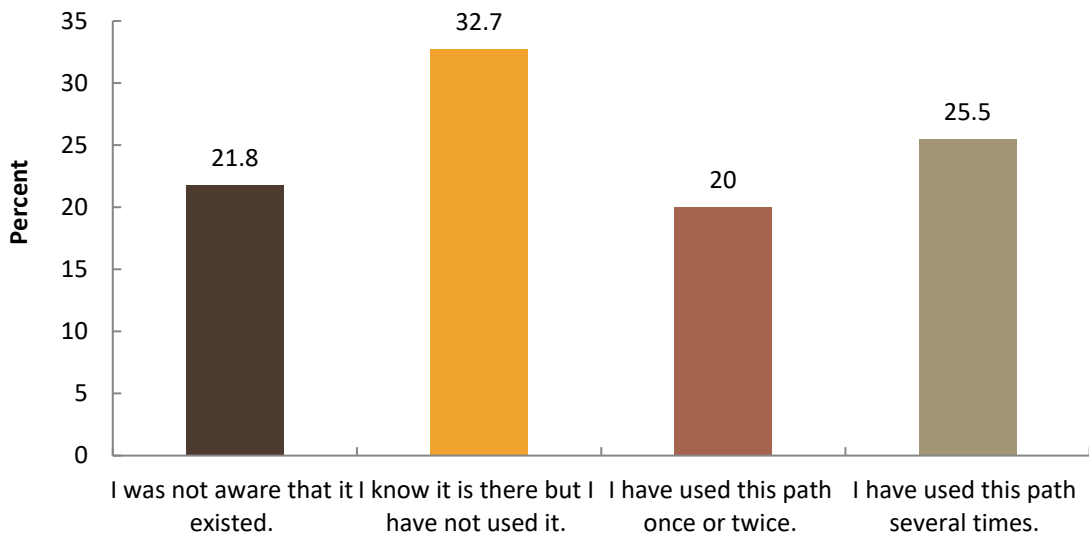


Figure 6

### Familiarity with the Midland Township Path



#### Evaluating the Park

Question 5 asked respondents to rate four aspects of the Midland Township Park as good, fair, poor, or don't know. Of those with an opinion (don't know responses filtered out), all respondents felt that maintenance and upkeep were good. Nearly 90% felt that safety and security were good. The ratings for

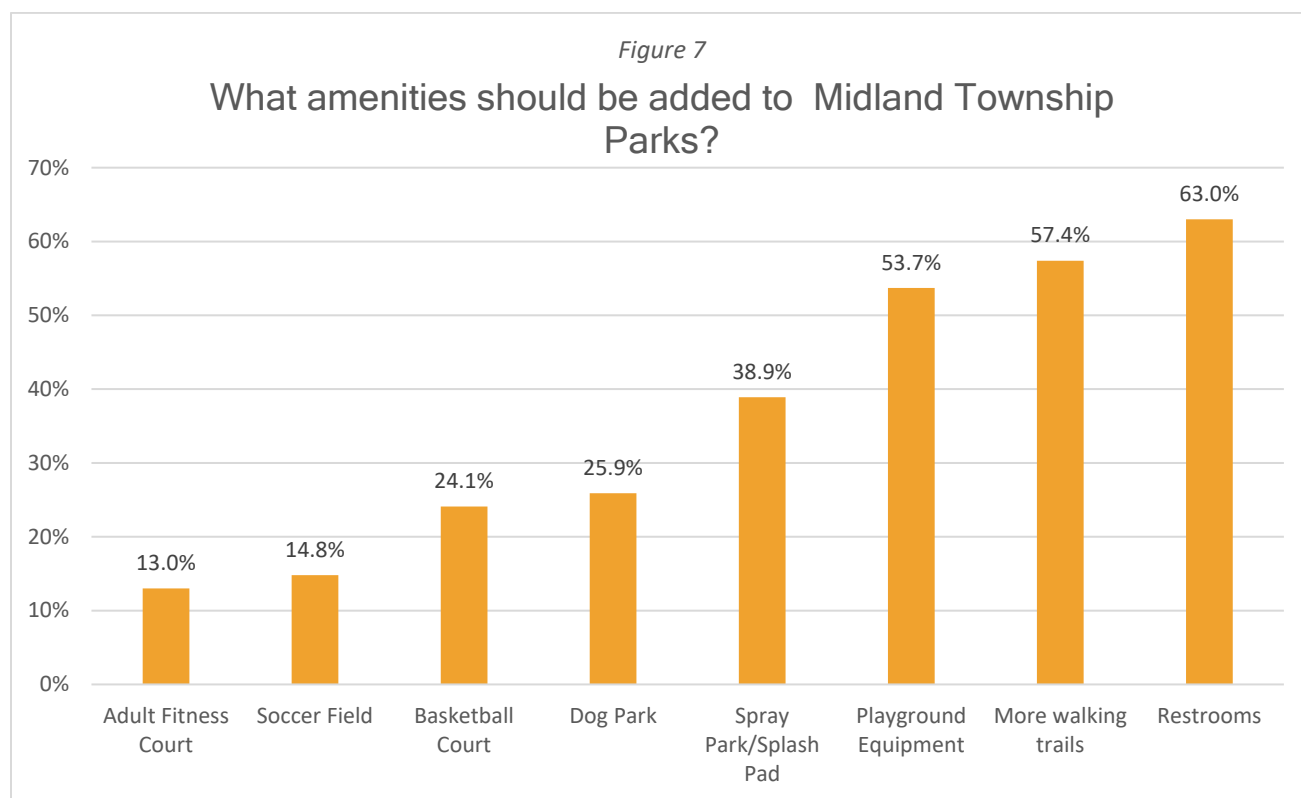
variety of amenities were weaker, with only 29% of respondents rating the variety as good. Fifty-five percent rated the variety as fair and 16% rated the variety as poor.

### Extending the Path

When asked if they would like to see the Poseyville Road path extended southward from the Township Hall toward Gordonville Road, nearly three-fourths of the respondents responded yes.

### Amenities Needed

Question seven of the survey offered 16 different amenities that could be added to the Midland Township Park system. Respondents could check all that applied. The most popular responses were restrooms (63%), more walking trails (57.4%), and playground equipment (53.7%). The top eight responses are shown in Figure 7 below.



### Open Ended Questions

Questions 8 and 9 were open ended, allowing respondents to fill in what they liked best about the Midland Township Park and Path and what they would do to improve the Midland Township Park and Path. Twenty-seven respondents filled in reasons they liked the park and twenty-one respondents filled in something they would like improved. Common responses for what was like best about the Park and Path were:

- Convenient/close to home
- How the path connects to other paths and destination points

- Safe place for running and walking

Common responses for what was needed in Midland Township Parks were:

- Extending the path
- More publicity for the park
- More activities in the park





# GOALS, OBJECTIVES & ACTION PLAN

## Planning for the Future

Developing goals and objectives is an important part of the recreation planning process. The overall goal of parks and recreation is to provide recreation opportunities for the community and/or region it serves. More specific goals must be based on the demographic characteristics of the population served, the physical and environmental characteristics of the area, and the input of the community.

Midland Township's recreational facilities bring people together and add to a sense of civic pride and belonging. Maintaining and updating park and recreational facilities will preserve the value and popularity of the Township's parks. Demographic and lifestyle changes will lead to new demands such as for more biking and walking trails or intergenerational programming.

Goals are the broadest level; they are overreaching and general. Objectives carry out the purpose of the goal. The Action Plan identifies specific projects and programs. The Action Plan can include organizational, staffing, programming, public information, and operation and maintenance actions. Midland Township formulated the goals and objectives in 2015 when it completed the joint Master Plan and Recreation Plan. The goals were reviewed and modified based upon the current characteristics of the community and the input received from the survey and the township board.

### **GOAL 1 - Provide recreational amenities in order to offer local residents and visitors outdoor gathering spaces for active and passive recreational uses.**

1. Continue to develop the township park, based upon on the direction provided in the Recreation Plan.

### **GOAL 2 - Provide safe, broad, community-based recreation opportunities that improve the overall quality of life for all residents of Midland Township.**

1. Develop recreational facilities that are accessible for users of all abilities.

### **GOAL 3 - Provide quality facilities for leisure time activities with special consideration given to activities improving health and fitness.**

### **GOAL 4 - Provide trails and multi-use paths for recreational and transportation use.**

1. Develop and expand the trail system for the Midland Township community.
2. Where possible, connect local trails to regional trails and destinations.

### **GOAL 5 - Increase public awareness and knowledge of the recreational opportunities in Midland Township.**

### **GOAL 6 - Take advantage of natural features in Midland Township for appropriate recreational activities.**

1. Use the Township’s wooded land and open space to their fullest potential when developing park.

#### **GOAL 7 - Foster regional collaboration for recreational programs and facilities.**

1. Look to partner with neighboring communities to provide more recreation opportunities for Midland Township residents.
2. Encourage joint use of school sites and buildings for recreation.

## **Action Plan**

With goals and objectives in place, Midland Township developed a 5-year action program to work toward accomplishing the goals and objectives. The Township reviewed the Action Plan items from the 2015 Master Plan and updated and added to them as needed. The Action Program details the direction the community wishes to take over the next five years in order to maintain and improve the quality and diversity of area park and recreation opportunities.

Potential projects were assigned a priority of 1 through 5 with 1 being most important and 5 being least important. Each action item relates to one or more of the numbered goals from the Goals and Objectives chapter. Potential capital improvements described in this Plan have been established not only to provide a framework for decision makers but also to enable the Township to apply for grant funding for these proposed projects.

The project list is not a fixed element and it is neither all-inclusive or exclusive. The schedule reflects the results of the input received from the online survey and Township officials. Future circumstances, especially availability of funding, may change priorities or require reprioritization of items.

### *Township Park Development*

#### **1. Add pickleball courts to the Township Park.**

Pickleball is a leisure activity that has grown greatly in popularity in recent years, especially with senior citizens.

Priority: 2

Relates to Goal: 1, 2, 3

#### **2. Add a Harmony Park to the Township Park.**

A Harmony Park generally refers to an all-inclusive playground and park area that is designed for users of all abilities and ages to interact and play together. It often focuses on providing facilities for those with autism and other sensory processing disorders.

Priority: 4

Relates to Goal: 1, 2, 3

#### **3. Add benches along the existing trail in the Township Park.**

Additional benches should make the trail more user friendly for people of all abilities.

Priority: 3

Relates to Goal: 1, 2, 3

## Trail Development

### 1. Extend the Midland Township Trail Southward to Gordonville Road.

The existing trail on Poseyville Road is very popular and the Township is anxious to extend it southward. This trail extension has been requested through the public input portion of this Plan and it is documented in the GLBRT Trail Plan and the 2019 MDOT Bay Region Nonmotorized Plan (MDOT BRNP). The MDOT BRNP is available online at [www.emcog.org/nonmotorizedplan.asp](http://www.emcog.org/nonmotorizedplan.asp). The GLBRT Trail Plan Map and Midland County Proposed and Existing Bicycle Transportation Map from the MDOT BRNP are included in the Appendix.

Midland Township is exploring two options for extending the trail southward. The first is to place the trail along Poseyville Road directly to Gordonville Road. The second option would extend the trail southward on Poseyville Road to Steward Road where it would head east to the Consumers Energy property. From there it would head south to Gordonville Road.

Priority: 1

Relates to Goal: 2, 3, 4

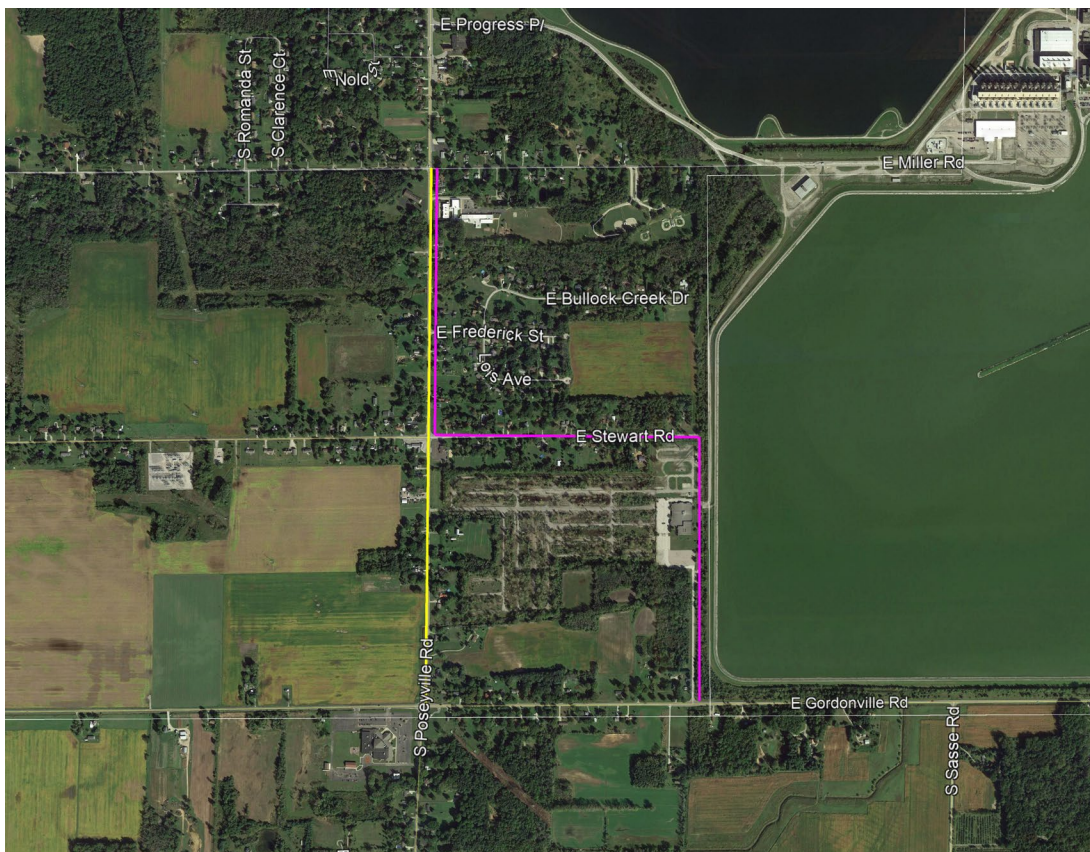


Figure 8- Two potential options for extending the Midland Township Path south to Gordonville Road. Image courtesy of Google Earth.

## Financing Potential Improvements

Funding for parks and recreation capital improvements can come from a range of local, state, and federal programs. Midland Township will look to various groups for grants to fund the park and trail improvements. Potential organizations to be considered would include local private foundations such as the Herbert and Grace Dow Foundation, the Midland Community Foundation, the Strosacker Foundation and the Gerstacker Foundation. In the public realm, Midland Township may apply to the Michigan Natural Resources Trust Fund, the Land and Water Conservation Fund, the Michigan Department of Natural Resources Passport Grant program, and the Michigan Department of Transportation.

The Township needs to be aware that grant applicants need to target potential funding agencies and programs very carefully so as to meet the specific criteria required. The Appendix contains a current listing of programs and agencies that can provide funding for parks and recreation projects.



# SUMMARY AND CONCLUSION

## A Plan supported by the Community

In its continuing effort to provide quality recreational opportunities for its citizens, Midland Township has developed a Parks and Recreation Master Plan as a tool to guide the development of community park and recreational facilities and locations over the next five years. This plan is the latest effort by the local governmental officials in Midland Township to establish recreational goals and objectives for the community. The plan will also provide the Township with eligibility for grants from the Michigan Department of Natural Resources (MDNR) to assist the community in reaching its recreational goals.

Midland Township contracted with Spicer Group of Saginaw, Michigan, to assist them with completion of the Parks and Recreation Master Plan. The consultant worked with Midland Township officials and staff through the course of the plan.

Data was collected about the Township including maps, demographics, park information and an inventory of existing facilities. This data was collected from a number of resources such as: township officials, Midland County GIS, field observations, U.S. Census, and various websites.

Community input was collected via an online survey conducted in September and October of 2019. Based upon the existing information and the community input, Midland Township developed goals and objectives for parks and recreation. Then, action plan items were written that would work toward accomplishing the goals and objectives.

The consultant completed the draft Recreation Master Plan document. The plan was made available for review at the Midland Township Hall and on the Midland Township website beginning on December 8, 2019. This reviewing opportunity was advertised in the \_\_\_\_\_. The final opportunity for community input occurred at the advertised public meeting held prior to adoption of the plan. This meeting was held on January 9, 2020 at the Midland Township Hall.

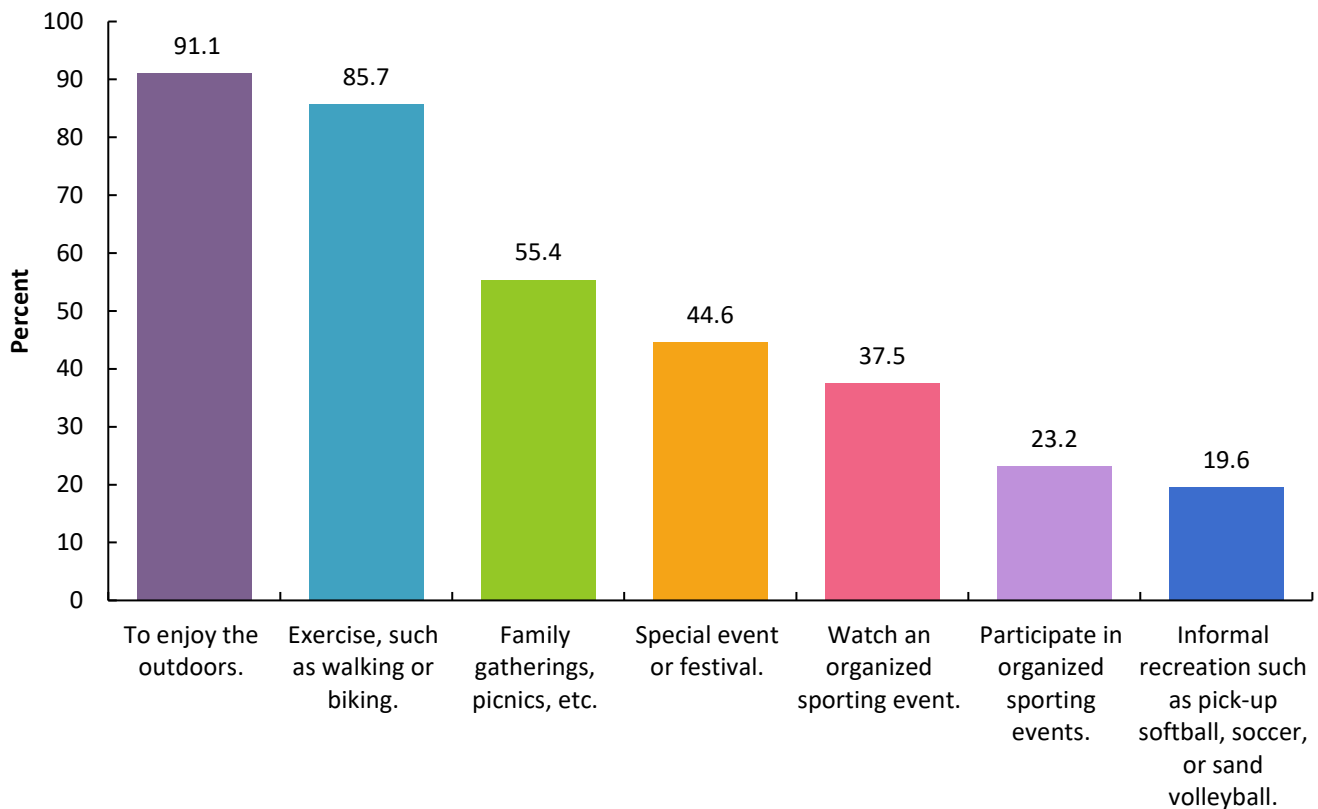
On January 9, 2020, the Midland Township Board passed a resolution adopting the Recreation Plan. Copies of the advertisements and resolutions are included in the Appendix.

***APPENDIX A***  
***Community Input Summary***

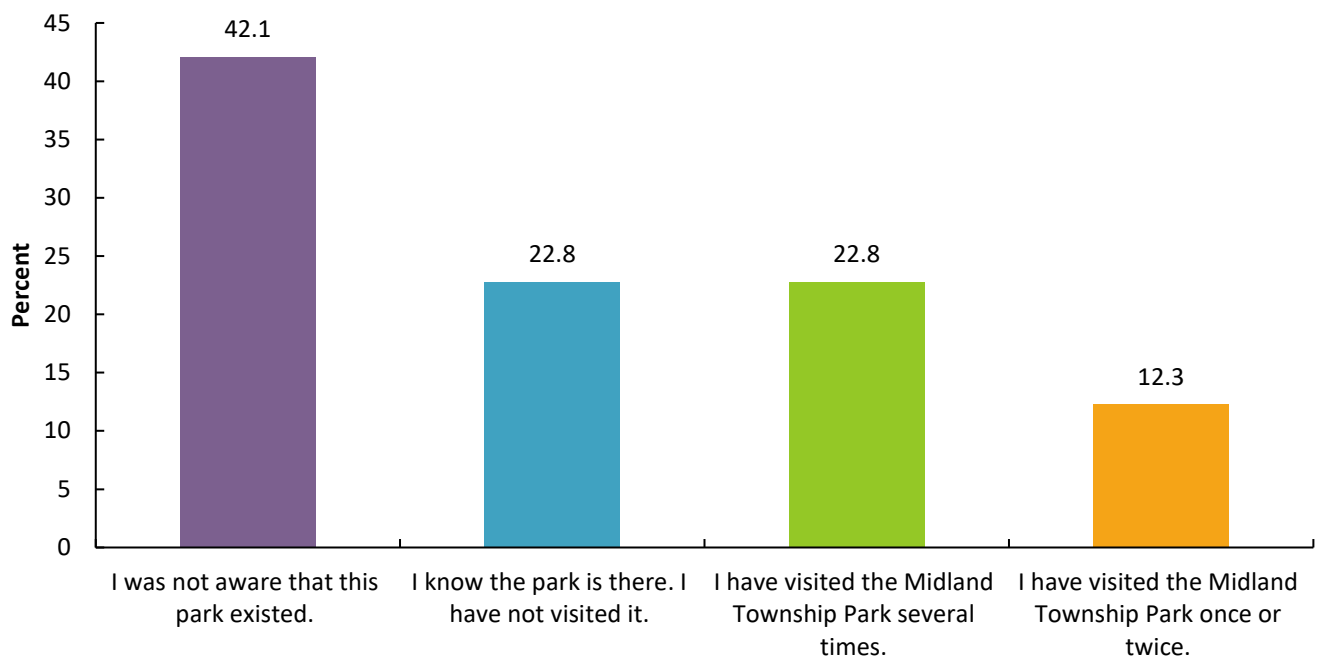
# Report for Midland Township Recreation Plan Survey

Response Statistics: **Complete Responses: 60 | Partial Responses: 1**

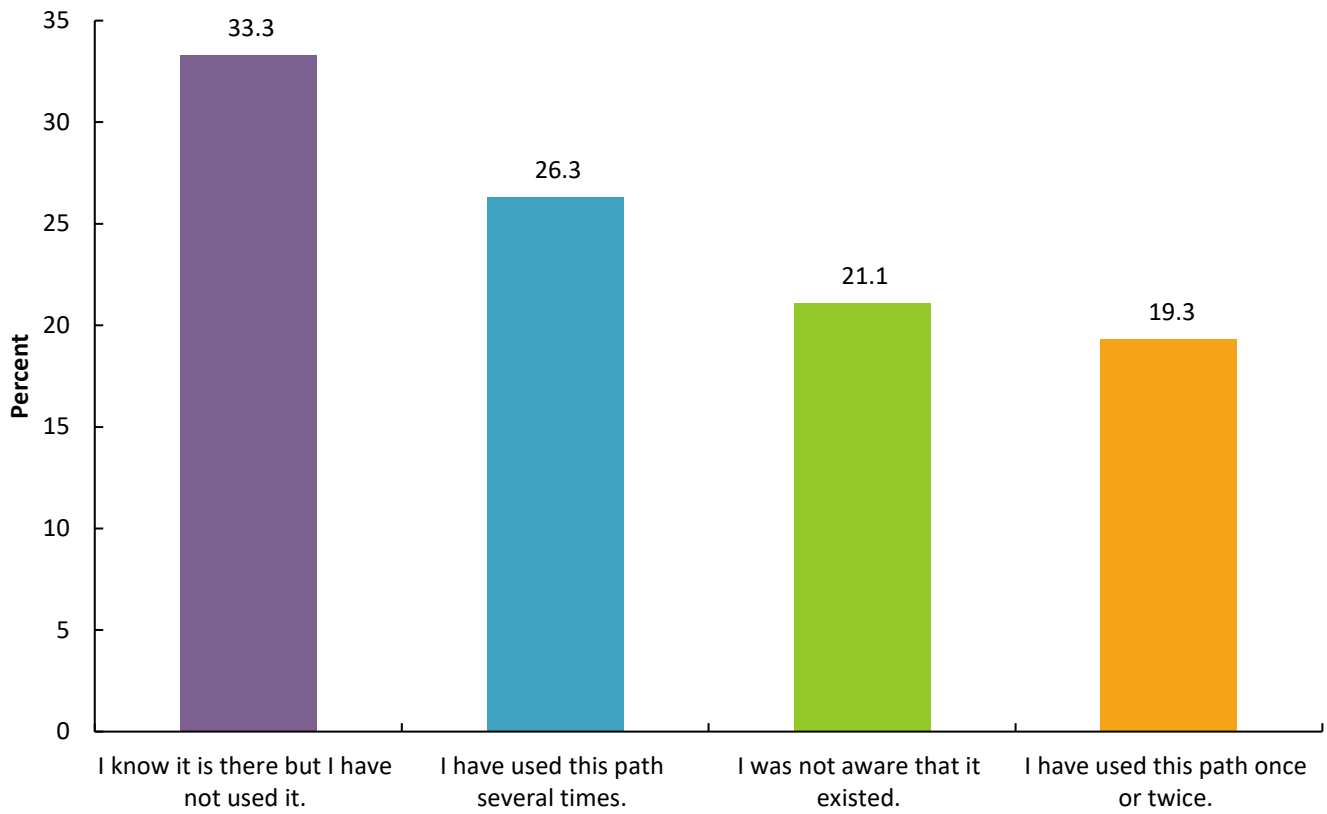
## 1. Why do you visit local parks in our community? Please check all that apply.



## 2. Midland Township owns and operates one park, known as the Midland Township Park. It is located adjacent to the Township Hall across from Bullock Creek Elementary School (at the corner of Miller and Poseyville roads). It includes a pavilion and walking path. What is your familiarity with this park?



**3. Midland Township also owns the path that extends from the Township Hall to Overlook Park on Poseyville Road. What is your familiarity with this path?**



**4. The development of the Midland Township Park and trails has improved the quality of life for residents of Midland Township.**

80% - Agree

20% No Opinion

0% Disagree

**5. Please evaluate the following aspects of the Midland Township Park**

	Good	Fair	Poor	Don't know	Total Checks
<b>Upkeep &amp; maintenance</b>	56.1%	0%	0%	43.9%	57
<b>Safety &amp; security</b>	45.6%	5.3%	0%	49.1%	57
<b>Variety of amenities</b>	15.8%	33.3%	8.8%	42.1%	57
<b>Handicap accessibility</b>	31.6%	3.5%	0%	64.9%	57



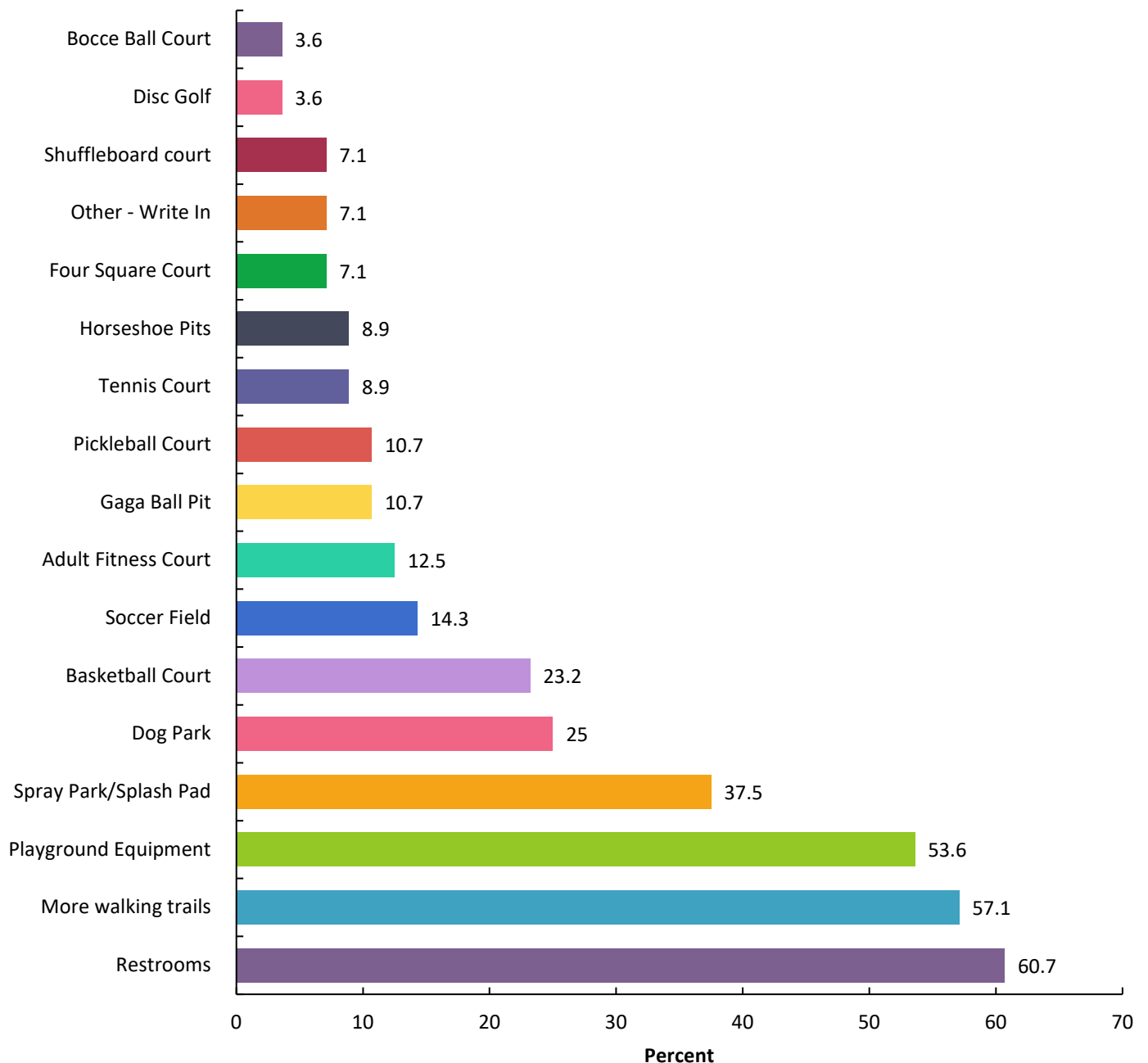
**6. Would you like to see the Poseyville Road path extended southward from the Township Hall toward Gordonville Road?**

75% - Yes

23% - No Opinion

2% - No

**7. What kind of additional amenities would you like to see added to the Midland Township park system? Please check all that apply**



**Other:**

- More bicycle trails connecting Midland township to Homer to Downtown Midland
- Sand Volleyball Courts
- Volleyball area

## 8. What do you like best about the Midland Township Park and the Poseyville Road Path? (29 Responses)

- A close convenient place to walk our dog in the evening after work.
- Dog friendly
- Open to everyone
- Not sure
- Great place to walk and feel like your in the country. But I would add some playground equipment and permanent restrooms
- It is close to my house & easy to access
- Never used it
- Convenience for the kids to ride their bikes
- Road path is nice to connect into the rest of the road trails that connect to town. We don't use them as we live in the area where they were before the addition.
- Convenience
- N/a
- I love how the path conn ya to the rail trail.
- I like the path for getting to the elementary school so I can run the track there. I did not know there was a twp park though so I may have to check that out for running!
- Walking
- Local
- More than we've ever had
- I'm not familiar with the Township Park.
- Having an outdoor place to exercise.
- It's close to home
- The large white Pines at the park and the walking trail. The path is very nice!
- Have not used it
- The path and park are safer than walking along Poseyville Road. I like to ride my bike on the path to Overlook Park.
- It's really quite peaceful and pretty for being right off a main road.
- The Poseyville Road path provides a safe route for township residents to travel via walking or biking to the rail trail beginning at overlook park. This was a huge benefit to our family. The park provides a great place, close to home to get outside and walk the trail and get fresh air. Would love to see this park further developed into basketball courts or other amenities that can bring the people of this small community together.
- Access from my home
- That it connects to the Railtrail.
- A place to walk with no traffic
- Safer access for pedestrians, we use it and see many other use it every day
- Great way to be outdoors and enjoy our awesome township.

## 9. What is one thing you would do to improve the Midland Township Park and the Poseyville Road Path? (24 Responses)

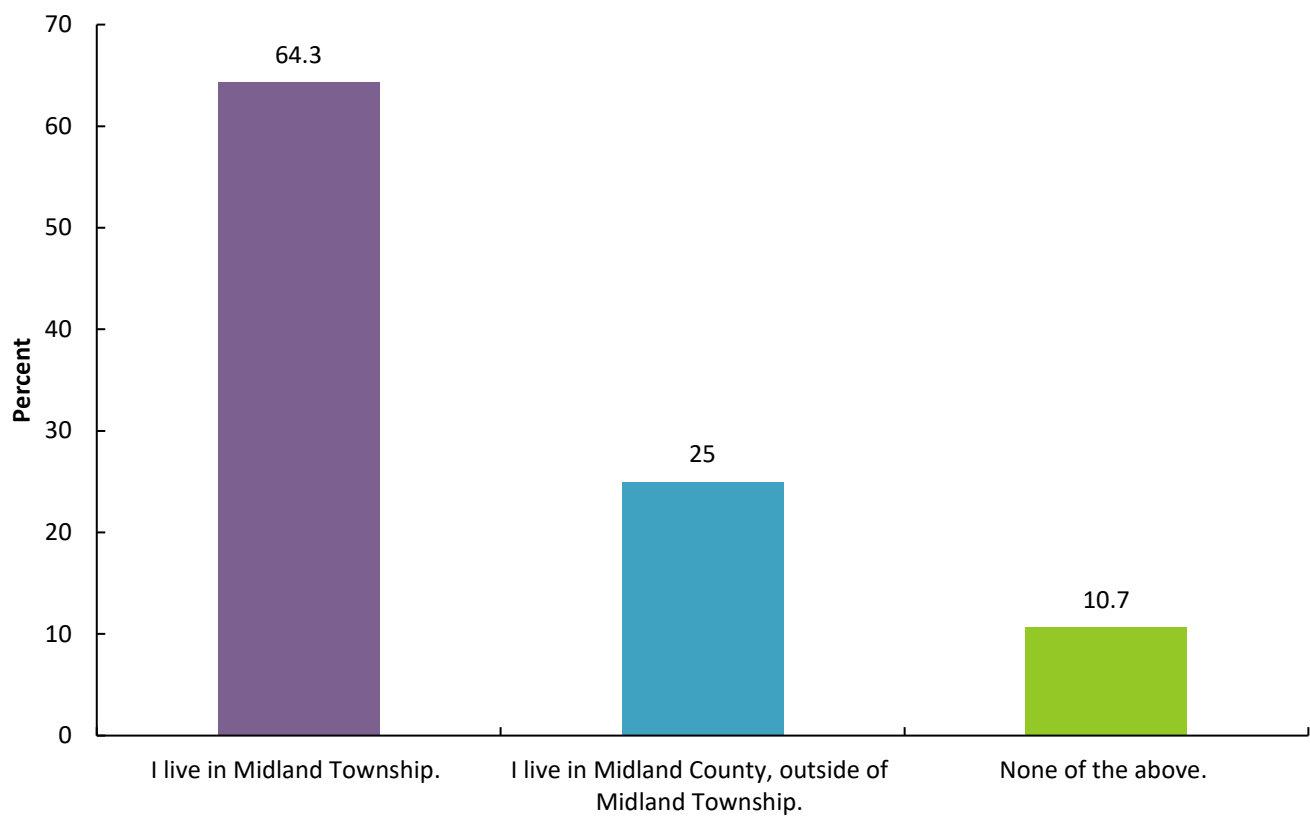
- Extend the path south toward The Creek.
- Extend to Stewart Rd
- Lighting for nighttime safety
- Make it more well know
- Playground equipment and a spray park
- Not sure.
- Make it more visible
- The park doesn't feel like a park. Just a pavilion. Would love to see different things to do to take younger kids to.
- Outside restrooms, power in pavilion.
- Add more activities to the "park" Update the township hall to be more modern
- Continue the path from BCEL all the way toward gordonville. I live on Poseyville and many children ride their bikes on the gravel, the businesses in the area would benefit and the safety of the families traveling on the road. I would love to be able to use the path but it just isn't safe to bike down Poseyville road to the path
- Maybe advertise it. I did not realize there was a park there for public use. A map would be nice, any information really. They I could better decide how or when we might use it and what I would like to see there.
- Not really sure
- Add more safety for walkers and bikers
- No thoughts right now
- Even though I'm not familiar with it, I would think that the park could use playground equipment and extending the path. Parents love to have places to bring their children to play!
- Extend the path south
- Dog Park!
- Extend Poseyville Road path to Gordonville- help the people of the township have easy access to live a healthy and active lifestyle, safely.
- Make Poseyville path longer
- Extend the path from Bullock Creek Elementary to Gordonville. The community has changed a lot over the last 17 years I have been a home owner. The traffic has greatly increased and so have businesses. Safety concern for youth and students that travel on the gravel sides of Poseyville to visit owens party store, Dollar General, The Creek Grill and Journeys at Messiah. It is extremely unsafe as most vehicles do not abide by the 45 MPH rule. Students in the area would have a safe place to ride and be able to utilize the Midland Township Park.
- Longer path and possibly at the closer areas to the road, some sort of protection barrier for children.
- I have not been to the park. The pathway is great. Maybe extend the pathway.
- Connect the path to Overlook Park and Midland City trails

**10. Do you have any other comments about parks and recreation in Midland Township? (15 Responses)**

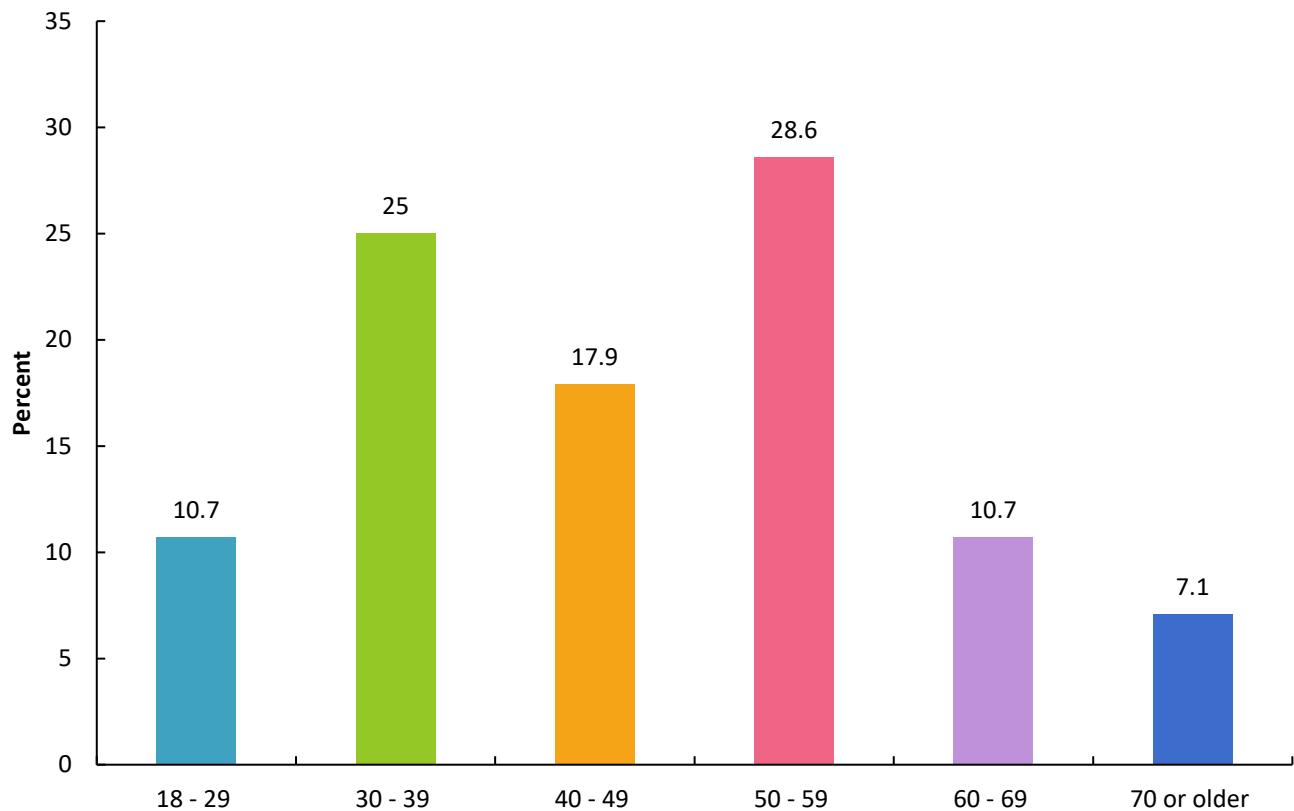
- No
- Looking forward to the future expansion of trails and park playground, permanent restrooms and a spray park.
- No
- No
- Creating a more cohesive community would benefit our township
- Nope
- No
- No
- Not really. Just the above comment about adding playground equipment for kids.
- A fully fenced in and secure dog park with dog obstacles would be awesome. The Chippewassee Park space is always too wet!
- Thank you
- I think it is great to see the change in the parks and recreation in Midland Township. The growing changes in our community have a need to feel the gap of things our community is missing such as a splash/spray park and more.
- More bicycle trails connecting areas in Bullock Creek between townships would be amazing! I would bike so much more to grab things from Poseyville area but right now I need to ride too many busy roads with little kids.
- Keep up the great work!
- Just keep maintaining what is in place. Looks great.



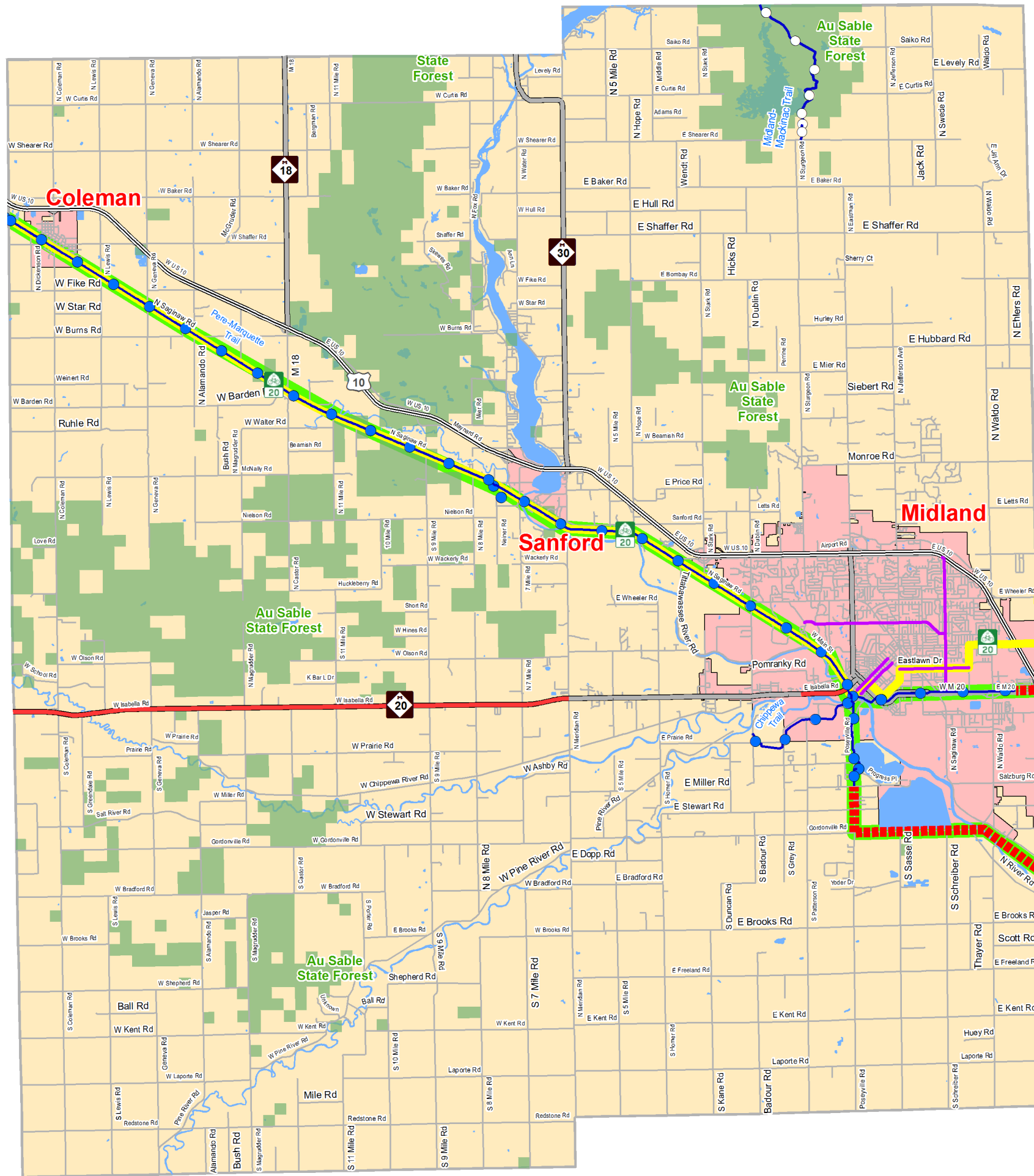
## 11.What is your relationship to Midland Township?



## 12.What is your age?



***APPENDIX B***  
***Bicycle Trail Map***

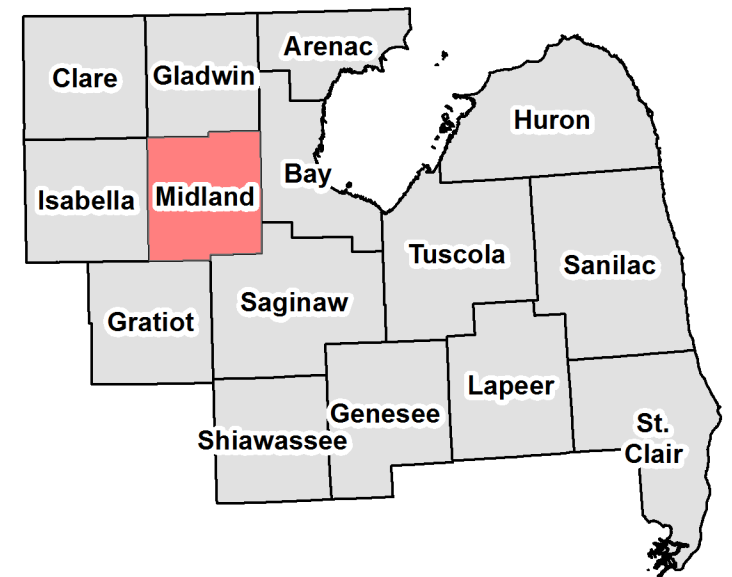


# Midland County

## Proposed & Existing Bicycle Transportation Map

### Legend

- Paved Shared Use Path
- Unpaved Shared Use Path
- Bicycle Lanes
- Paved Shoulders >=4'
- Proposed Bicycle Facilities
- US Bicycle Route 20
- Regional Corridors
- Public Lands



1 in = 3 miles



East Michigan Council of Governments  
3144 Davenport Ave. Suite 200  
Saginaw, MI 48602  
989-797-0800 Fax 989-797-0896  
[www.emcog.org](http://www.emcog.org)



Created 12/21/2018

## ***Appendix C***

### ***Sources of Funding***



## **SOURCES OF RECREATION GRANT FUNDING IN MICHIGAN**

### **Michigan Natural Resources Trust Fund (MNRTF)**

- Match requirement – minimum of 25%
- Development grants
  - Minimum Grant Request \$15,000
  - Maximum Grant Request \$300,000
- Acquisition grants
  - No minimum or maximum
- Goals of MNRTF Board
  - Resource Protection
  - Water Access
  - Community Recreation
  - Urban Recreation
  - Economic Development
- Due annually on April 1
- [www.michigan.gov/dnr](http://www.michigan.gov/dnr)

### **Land and Water Conservation Fund (LWCF)**

- Administered by MNRTF
- 50% match required
- Minimum grant request \$30,000 (\$60,000 project total)
- Maximum grant request \$300,000 (\$600,000 project total)
- Funds a wide variety of outdoor recreation projects
- Applications due annually on April 1
- [www.michigan.gov/dnr](http://www.michigan.gov/dnr)

### **Michigan Recreation Passport Grant**

- Administered by MNRTF
- Focus is on improving and renovating existing parks
- Minimum Grant Request - \$7,500, Maximum \$150,000
- Applications due on April 1
- For outdoor *and indoor* recreation projects
- [www.michigan.gov/dnr](http://www.michigan.gov/dnr)

### **Michigan Department of Transportation - Transportation Alternatives Program**

- For non-motorized transportation (paths) and rehabilitation and operation of historic transportation buildings, structures, or facilities (bridges, railroad depot, etc.)
- 20% minimum match required, 40% recommended
- Eligible applicants include county road commissions, cities, and villages. Other organizations may *sponsor* applications (i.e. County Road Commission or local MDOT office sponsors a township application)
- Rolling on-line application process
- [www.michigan.gov/mdot](http://www.michigan.gov/mdot) Go to “Projects and Programs”.

### **Great Lakes Fisheries Trust (GLFT)**

- Objective – improve or create shore-based Great Lakes recreational access.
- Must be located on the Great lakes or lower portions of major tributaries
- Matching funds not required but projects with local funding will be favored.
- Relatively simple application form and requirements.
- Due dates vary.
- [www.glft.org](http://www.glft.org)

### **Michigan Coastal Management Grants**

#### **Objectives**

- Protect, manage and restore coastal communities and habitats
- Restore historic structures
- Revitalize urban waterfronts
- Increase recreational opportunities along Michigan's Great Lakes coast
- Applicant must be a coastal unit of government
- Maximum grant request - \$100,000
- Match requirements – 50% (some flexibility in match for non-construction projects that result in changes to local master plans or zoning ordinances, regional greenways, or include conservation planning)
- Eligible projects
  - Studies, Designs and Land Use Plans – must have a direct connection to coastal planning and/or resource protection.
  - Construction – boardwalks, trails, lighthouse preservation, habitat restoration, scenic overlook, etc.
- [www.michigan.gov/ogl](http://www.michigan.gov/ogl)

#### ***Other grant programs to consider:***

### **Coastal Program – Great Lakes – US Fish and Wildlife Service**

- Grants to conserve fish and wildlife and their habitats and to support healthy coastal ecosystems
- Rolling application process
- [www.fws.gov/midwest/greatlakes/apply.htm](http://www.fws.gov/midwest/greatlakes/apply.htm)

### **Specific sports and sports foundations**

- United States Tennis Association (USTA)
  - funding for tennis courts and programs
  - [www.usta.com](http://www.usta.com)
- Major League Baseball
  - Baseball Tomorrow Fund
  - [www.baseballtomorrow.com](http://www.baseballtomorrow.com)
- United States Soccer
  - [www.ussoccerfoundation.org](http://www.ussoccerfoundation.org)

## **Safe Routes to School**

- For projects near elementary and middle schools:
  - Sidewalks
  - Traffic calming and speed reduction
  - Pedestrian and bicycle crossing improvements
  - On-street and off-street bicycle facilities
  - Off-street pedestrian facilities
  - Traffic diversion improvements in the vicinity of schools
- Need to complete the safe routes planning process to apply
- [www.saferoutesmichigan.org](http://www.saferoutesmichigan.org)

## **Trust for Public Land (TPL)**

- Conservation Transactions  
TPL helps structure, negotiate, and complete land transactions that create parks, playgrounds, and protected natural areas. TPL serves as an independent agent, buying land from willing landowners and then transferring it to public agencies, land trusts, or other groups for protection. In some instances, TPL will protect land through conservation easements, which restrict development but permit traditional uses such as farming and ranching.
- [www.tpl.org](http://www.tpl.org)

## **Michigan Department of Environmental Quality (MDEQ) Nonpoint Source Pollution Control Grants**

- Must be part of a watershed management plan
- Projects aimed at reducing nonpoint source pollution (streambank and shoreline stabilization, rain gardens, erosion control, conservation easements)
- 25% match required
- [www.michigan.gov/egle](http://www.michigan.gov/egle)

## **Community Foundations**

### **Private Foundations and Endowments**

Wickes Foundation  
Strosacker Foundation  
Gerstacker Foundations  
Consumers Energy

## **KEEP IN MIND...**

- Match requirements can usually be in-kind services, donations, or cash
- Most grants are provided on a reimbursable basis.
- Barrier free accessibility is usually required for improvement projects,
- Multiple partners, multiple jurisdictions can be viewed favorably – think “regional” projects.
- Grant applications can be complicated, detailed and competitive. Make sure your grant writer is familiar with the grant and funding source. Learn as much as possible ahead of time to know if your project has potential for funding.

***APPENDIX D***  
***Notification & Documentation Information***